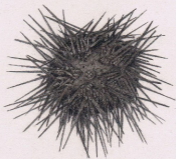




Clibanarius panamensis



Class. 3. 1811

Arbacia lixula

Scale: natural size

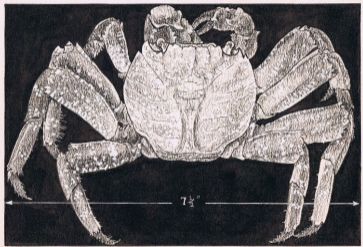


Euxapta laypa, English Harbor, Antigua, B. W. I.
xl. July 17, 1918. Anterior portion.
Entire animal was 2 feet long when extended,
1 foot contracted. Similar to our specimens of *Euxapta godeffroyi*.
S L-40. Drawing supplied by Dr. Fisher

Euxapta laypa (by fish) English Harbor, Antigua, B. W. I.
July 17, 1918. (S L-40) (by fish) (by fish) (by fish)

1 Negative. Glossy. Shoot
hard for sharp contrast, not holding
details. *nothin*

3"



Crabs *grapsus*

Sally Lightfoot

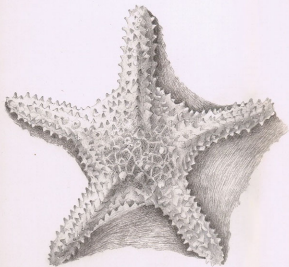
SR-67



Alfred S. Peck

Decapoda occidentalis

Scale, natural size



Grassi Spratt

oastar occidentalis